

Remote Support For 890 Drive Systems

The Parker SSD Drives' Ethernet Communications Interface Options (TechCards) offer incredible versatility to a line-up of AC drives already well known for their power to perform. Not only do they provide a fieldbus interface for simultaneous connections to the most widely used communications protocols, they also provide complete programming and troubleshooting capabilities over any LAN, WAN, or the Internet. Furthermore, a static IP address is not a requirement. All you need is your LAN or Internet access. Read on to discover how simple this is to setup.

[Click here for more information on the 890 family of drives](#)

Product Features

- ◆ For use with 890CD Common Bus Drive, 890SD Standalone Drive, and 890PX Drive
- ◆ Galvanically isolated bus electronics
- ◆ LEDs to indicate network and module status
- ◆ Software configurable
- ◆ Maximum of 256 bytes of input data
- ◆ Maximum of 256 bytes of output data
- ◆ Supports RTNX protocol to connect to Drive System Explorer (DSE)

Modbus/TCP (8903/IM)

- ◆ Modbus TCP/IP
- ◆ 10/100Mbit/s
- ◆ Up to 4 simultaneous connections

Profinet/IO (8903/PN)

- ◆ Real-Time (RT) Profinet IO
- ◆ 100Mbits/s
- ◆ GSD file available

Ethernet/IP (8903/IP)

- ◆ Ethernet IP
- ◆ 10/100Mbit/s
- ◆ Level 2 I/O Server CIP
- ◆ Supports 4 class 1 connections (for cyclic I/O data transfer)
- ◆ Supports 16 class 3 connections (for explicit messaging)
- ◆ EDS file available



[Click here for the Ethernet Communications Product Manual](#)

A Typical Control System With Ethernet Communications



890 Common Bus AC Drive System



HMI



PLC



Ethernet Switch

Get Connected



Anywhere



Configuring DSE to Connect over Ethernet

It is quite simple to connect DSE (Drive System Explorer) to any 890 Drive with an Ethernet option to allow Configuration, Installation, Update and On-Line Monitoring. This also includes any 890 drive on the same network using Firewire or Peer-To-Peer communications. This is an alternative to the USB connection, with the advantage of speed and remote connection. Note – it is not possible to Install Firmware over Ethernet, this must always be done over USB.

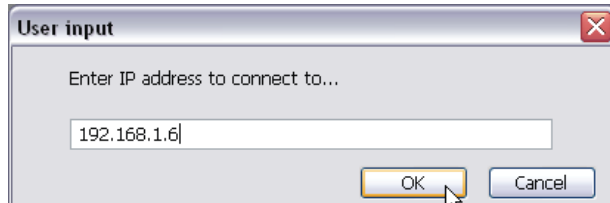
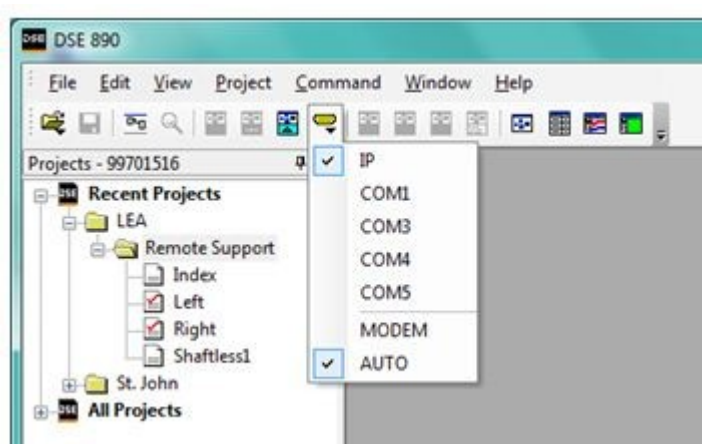
1

[Click here for the DSE890 Software Manual](#)

2

Click on the Comm Port icon and select IP

Enter the IP address of 890 Drive to connect to.



Once the IP setup is complete the only other requirement is access to the IP address of the 890 drive. Various options exist; wired-LAN, wireless LAN, static IP, or a 3rd party Industrial Broadband VPN Router. Contact us for more information.